



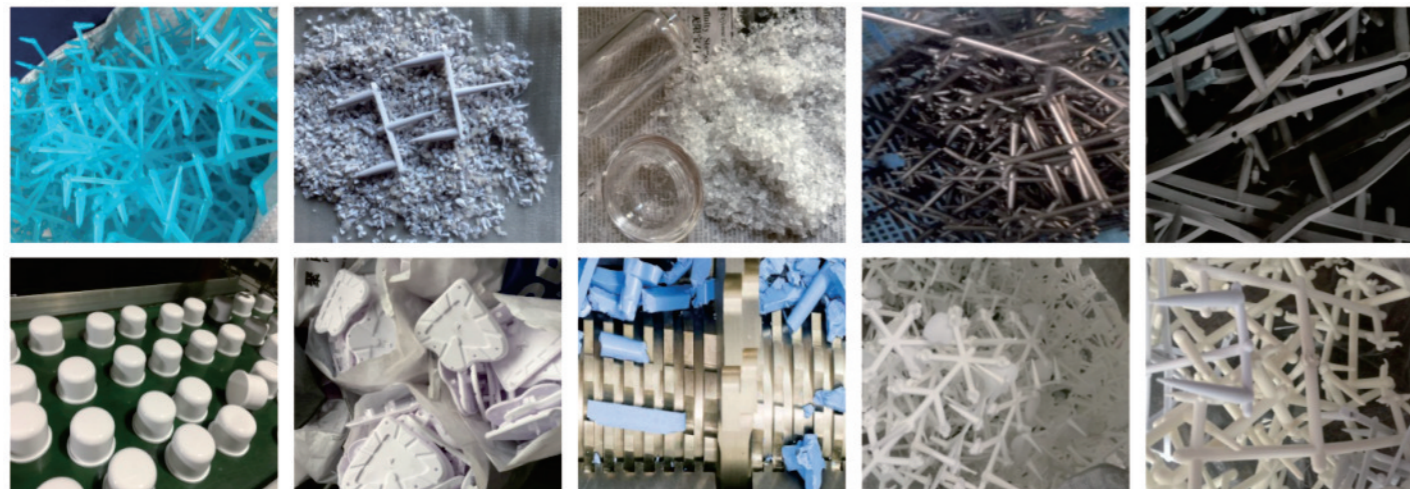
The recycling rate of the current plastics is very low, and the traditional plastic recycling method has the problems of large noise, serious secondary pollution, dust, uneven particles and high labor costs. grinder. It is especially suitable for placing it next to plastic machinery such as injection molding machine/blow molding machine. It can be used for efficient pulverization and automatic recycling of various plastic nozzles, trims, semi-finished products and waste products. This can greatly improve the recycling rate of plastics, reduce production costs and labor costs, and optimize the workshop environment.

**HGLS, Slow speed granulator**, is suitable for efficient crushing and automatic recycling of gates, crushed materials, small parts and waste products. It is compact, quiet, slow, efficient, automatic recycling, no screen and dust-free.

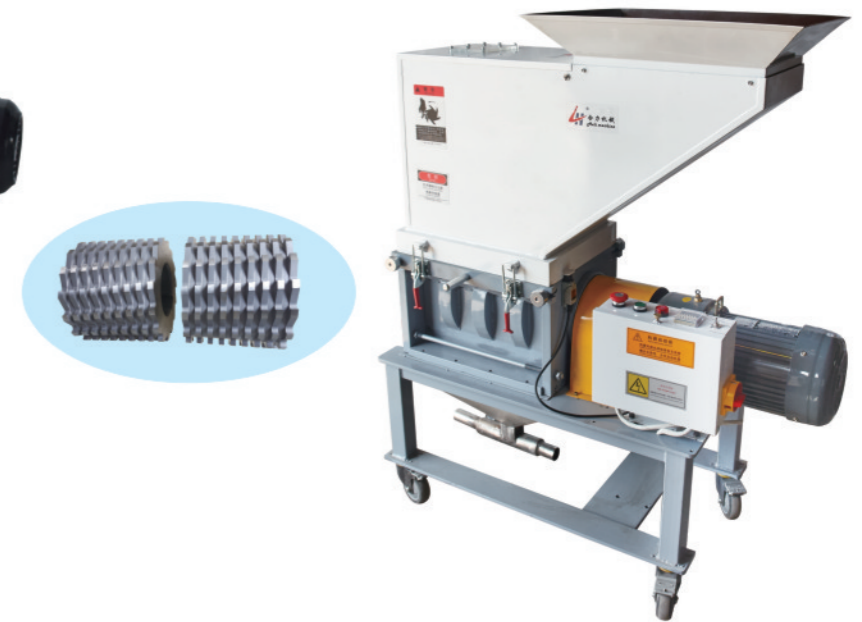
**HGMS, Low speed granulator**, suitable for broken plastics with certain output requirements, soft and hard plastics such as PP, dendritic and mesh plastics. Among them, HGMS1000/15000 series is mainly suitable for the crushing of hollow materials in plastic bottles and other blow molding products.

**HGSS, Hard block granulator**, is mainly suitable for crushing and recycling of thick material of hard block material.

**Application:**



**HGLS SLOW SPEED Granulators**  
Beside-the-Press Recycling  
In a Compact, Quiet, Slow Speed, High Efficiency,  
Automatic Recovery, Screenless and no dust.



**Features :**

- Low power, slow speed, low noise and low dust.
- Using Taiwan's geared motor, low noise, high efficiency, stable performance, long service life and high transmission torque.
- Double-layer shock-absorbing material with built-in soundproof interlayer to reduce noise and improve the environment.
- Using imported SKD-11 material custom tool and cast steel tool holder structure, the tool can be sharpened and durable. Use a helical knife, eat better.
- The blade structure is different. Three sets of integral rotary knives are used, which are non-packed, more compact and durable, and the smashing is more thorough and uniform.
- The motor drive mode adopts the shaft drive, which adopts the separate structure of the cutter and the gear motor. It is more stable and reliable than the old model. Dis assembly, maintenance and maintenance are more convenient.



- Well-designed full-open structure, the crushing chamber can be fully opened left and right. Compared with the the upper and lower opening forms used by the old models, cleaning, maintenance and color change are faster and more convenient. The bottom, corners and gaps of the knife holder will not be Residue of waste.
- High-quality power system, low speed and quiet. Quiet operation (70 to 80 dB).
- Screenless design, uniform pulverized particles, very little powder content, can be mixed with new materials immediately.
- The electronic control part adopts the integrated touch electric box design, and the famous brand electrical components such as Schneider, which is safer to use, more convenient to operate and more complete in function.
- Complete safety protection measures to ensure safe and manual operation. This machine has functions such as overload and overheat protection, power supply protection, automatic fault alarm, emergency stop protection, etc. It is equipped with multiple safety interlocks to ensure the safety of cleaning and maintenance personnel.
- European design, steel structure box, beautiful and sturdy. Compact, mobile, easy to use and space saving.

### Specifications:

Model	HGLS150	HGLS200	HGLS300	HGLS350
Drive power	1.5HP/1.1KW	2HP/1.5KW	3HP/2.2KW	3HP/2.2KW
Rotating speed (RPM)	26 R/min			
Fixed knife (把)	6	6	6	8
Swing knife (组)	2	2	2	3
Rotate the knife (把)	3	3	3	4
Crushing capacity (kg/h)	15-20	20-25	20-35	25-30
Chopper size (mm)	252*252	320*320	320*320	350*350
Input size (mm)	315*248	345*340	345*340	365*350
Weight (kg)	180	220	250	305
Outline size (mm)	850*420*1150	1000*480*1220	1000*500*1450	1200*500*1450
Noise level (db)	50-60		70-80	

\*Special design upon request.

### Continuous optimization and upgrading:

More efficient, more energy-saving, safer, easier to use and maintain



15款 (上下打开)



16款



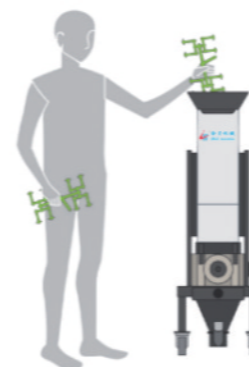
18款



最新款

### Feeding:

#### Hand Feeding



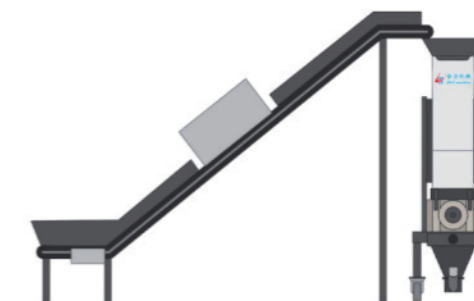
The waste is manually pulverized by putting it into granulators.

#### Robot Feeding



The waste is directly put into the pulverizer by the robot to be pulverized

#### Conveyor Feeding



The waste material is metered and conveyed into the pulverizer by a conveyor belt for pulverization.

### Recycling Mode ; Optional

#### A. Fan Upper Blowing Type

Optional fan and new triangular recovery device, the pulverizer is blown into the triangle recovery device of the machine through the fan, and used proportionally.



#### B. Proportional Control Type

Optional new and old material proportional valve, the pulverized material is inhaled into the machine table or the barrel by the vacuum suction machine.



#### C. Pneumatic Loading Type

Optional pneumatic feeder is used to feed the pulverized material into the machine or the drum through compressed air.

